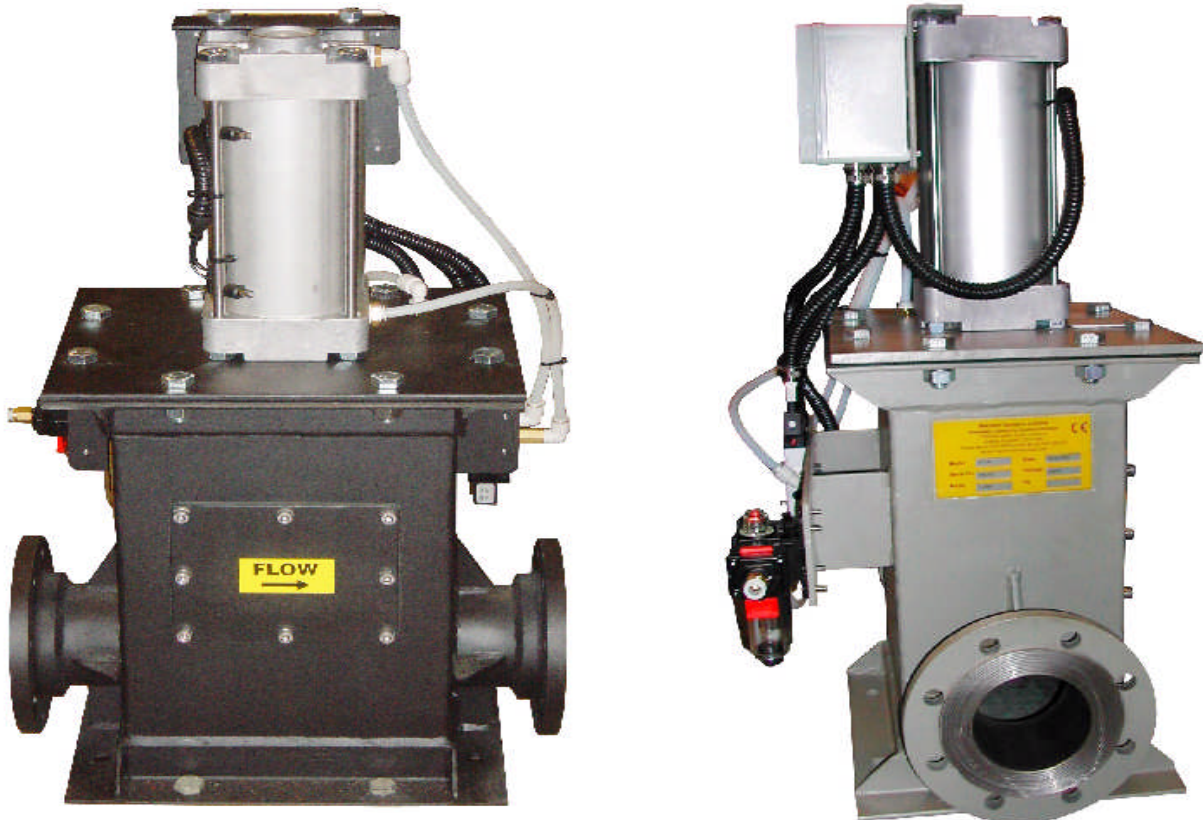


DUMP VALVE



The **Dump Valve** is a very convenient method of distributing material into many reception locations in a pneumatic conveying system. It is mounted onto the top of the reception hopper or silo connected to a simple rectangular flange.

A rectangular casing encloses a shoe containing two material direction arrangements supported by an air cylinder. The air cylinder drives the shoe between two positions.

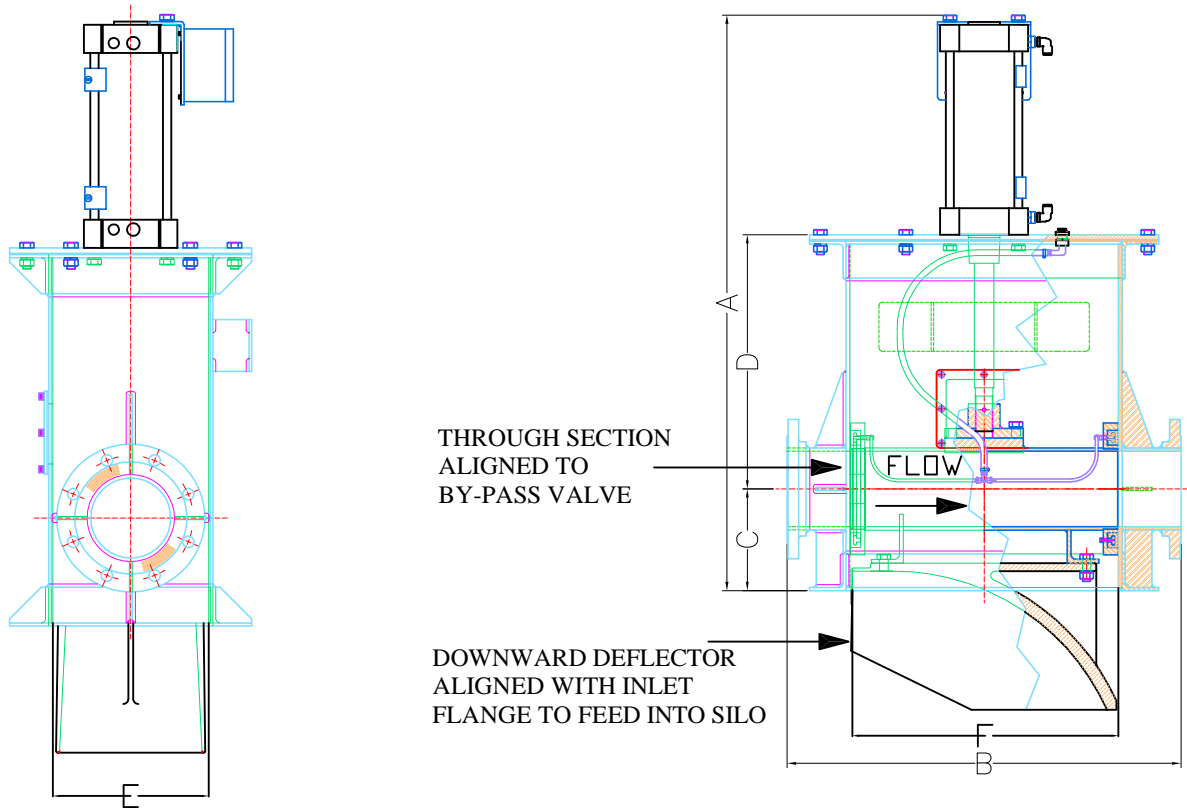
In the up position a deflector casting causes the material to be sent downwards into the silo. In the down position a pipe section is aligned between both inlet and outlet ports to allow the material to pass directly through the valve. Inflatable seals in each end of the pipe section prevent leakage of material into the hopper when the material is passing to a subsequent destination.

Operation of the valves is controlled by the conveying system controls to signal for the correct valve position in response to the operator's or process requirements. The valve changes position if required at the period when the conveying pipeline is not passing material. Correct valve position is confirmed with proximity sensors for both valve positions.

Macawber
Engineering Inc.,

ADVANCED PNEUMATIC CONVEYING & INJECTION SYSTEMS
VALVES FOR ABRASIVE MATERIALS AND PRESSURE DUTY
BATCH MIXING AND INGREDIENT CONTROL
COMPLETE BULK MATERIAL SYSTEM DESIGN AND TURNKEY SUPPLY

DUMP VALVE



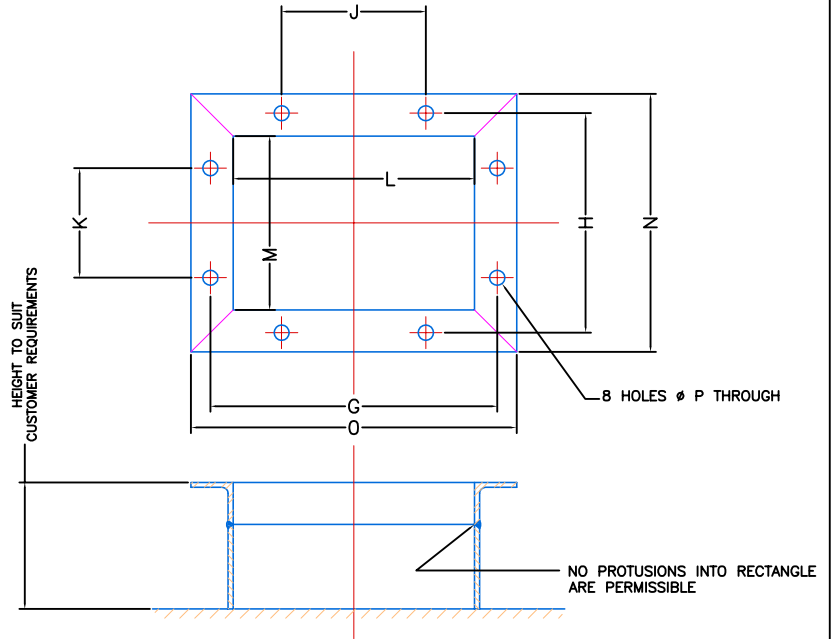
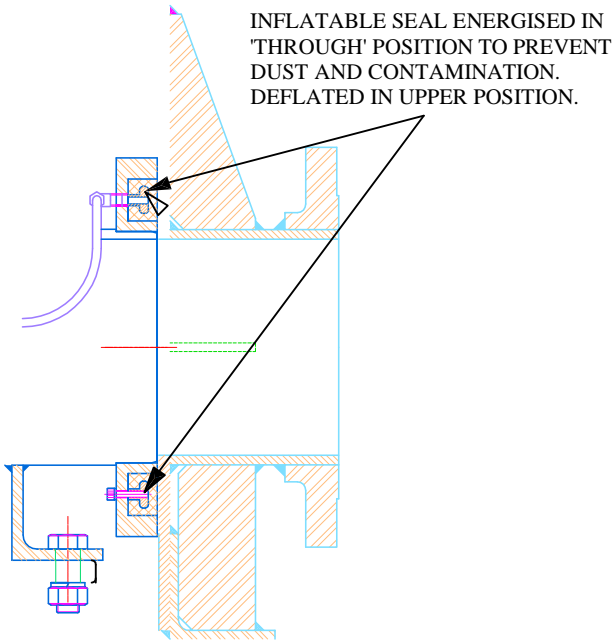
MODEL (PIPE SIZE)	DIMENSIONS (INCH)						NET WT. (LBS)
	A	B	C	D	E	F	
2"	23 1/8	14 1/2	4	9 3/8	6	9	134
3"	25 3/4	18	4 3/4	10 5/8	8	11 1/4	225
4"	25 5/8	19 1/2	5	10 3/8	8	11 1/4	249
5"	35 1/8	22 1/8	6	15 7/8	9 1/4	11 1/4	311
6"	39 1/2	31 3/4	8	17 1/4	12	21 5/8	590
8"	47 1/2	33 1/2	9	21 3/8	12 5/8	23 5/8	983
10"	58 3/4	43 1/4	11 1/2	28 1/8	16 1/2	29 1/2	1342
12"	62 7/8	48	13 1/4	28 1/2	20	37	1452

INFORMATION NOT CERTIFIED FOR INSTALLATION PURPOSES

Macawber
Engineering Inc.,

ADVANCED PNEUMATIC CONVEYING & INJECTION SYSTEMS
VALVES FOR ABRASIVE MATERIALS AND PRESSURE DUTY
BATCH MIXING AND INGREDIENT CONTROL
COMPLETE BULK MATERIAL SYSTEM DESIGN AND TURNKEY SUPPLY

DUMP VALVE



MODEL (PIPE SIZE)	DIMENSIONS (INCH)								
	G	H	J	K	L	M	N	O	ϕ P
2"	11	4	6 1/4	4 3/4	9 1/2	6 1/4	9 1/2	12 1/2	1/2
3"	13 3/8	10 1/4	6 3/4	5 1/8	11 1/2	8 3/8	12 1/4	15 1/2	3/4
4"	13 3/8	10 1/4	6 3/4	5 1/8	11 1/2	8 3/8	12 1/4	15 1/2	3/4
5"	17 1/2	11 1/2	9 1/2	5 1/2	15 1/2	5 1/2	13 1/2	19 1/2	3/4
6"	26 3/8	16	12 1/2	9	22 1/4	12 1/2	18 3/8	28 1/8	3/4
8"	28 3/8	17 3/8	14 1/4	9 7/8	23 5/8	12 3/4	18 1/2	29 1/2	3/4

INFORMATION NOT CERTIFIED FOR INSTALLATION PURPOSES

Macawber
Engineering Inc.,

ADVANCED PNEUMATIC CONVEYING & INJECTION SYSTEMS
VALVES FOR ABRASIVE MATERIALS AND PRESSURE DUTY
BATCH MIXING AND INGREDIENT CONTROL
COMPLETE BULK MATERIAL SYSTEM DESIGN AND TURNKEY SUPPLY